



Technical Guide: **LLC3 Swivel Shank Ripper**



Manufactured to suit:

CAT - 950G, 950H, 950K, 962G, 962H, 962K

Komatsu - WA380-6, WA430-5, WA430-6

John Deere - 644J, 644K, 724J, 724K

Volvo - L110F, L120E, L120F

Hitachi - ZW220, ZW250, LX190-7, LX200, LX210E

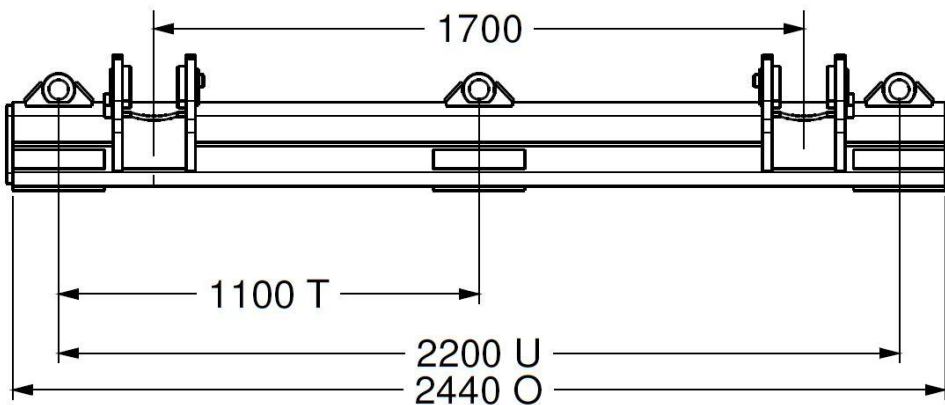
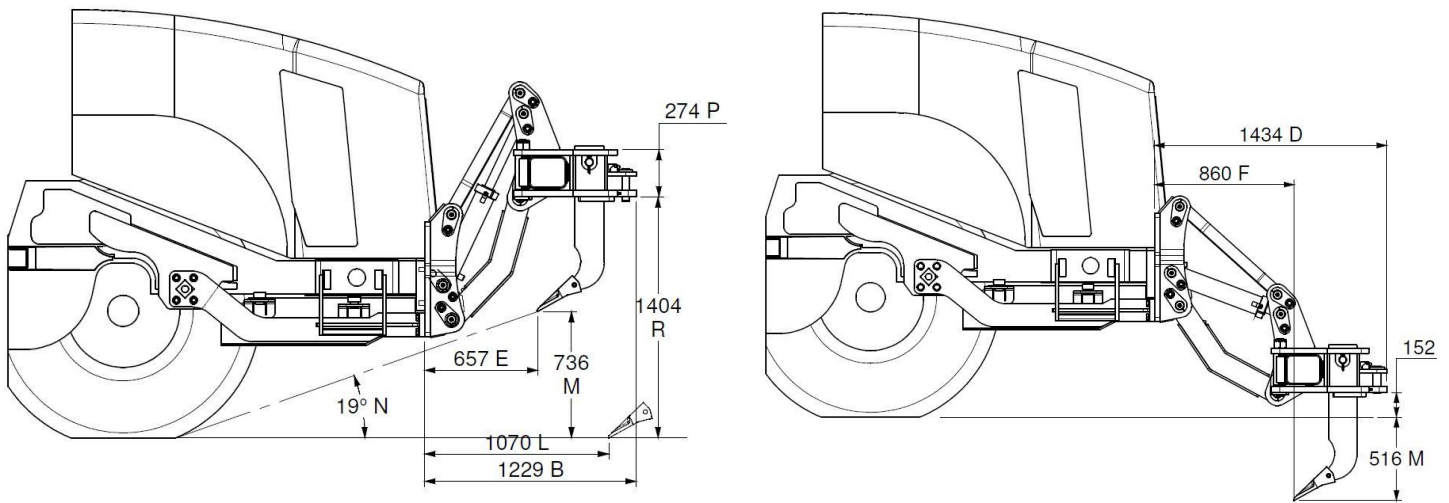
Gessner LLC3 Swivel Shank Rippers

Product Features:

- **Ripper Mounts.** Loader Ripper mounts feature two chassis rails which weld to either side of the chassis. These rails feature a number of tapped bolt holes. The loader ripper mounts bolt into these tapped holes.
- **Bottom arm.** All Gessner Loader Rippers feature a fabricated bottom arm with internal stiffeners, machined bosses and case hardened bushes at each mounting point.
- **Top Arms.** All Gessner Loader Rippers feature a solid plate top arm with machined bosses and case hardened bushes at each mounting point.
- **Pins.** All pins featured in Gessner Loader rippers are manufactured from high tensile 4140 precision ground shaft, and feature mild steel retainers (where applicable).
- **Bushes.** All bushes featured in Gessner Loader Rippers are machined from mild steel and are case hardened through heat treatment.
- **Fabricated Main Beam.** All Gessner Loader Rippers feature a fully fabricated main beam with swivel shank sockets.
- **Shanks.** All Gessner Ripper Shanks are manufactured from 400 grade high tensile plate sourced from premium steel suppliers.
- **Cylinders.** All Gessner Cylinders are manufactured in house, including all steel cylinder internals. Bulldog seal kits ensure long service. Cylinder rods are machined from induction hardened chrome. LLC3 Rippers two heavy duty lift cylinders.
- **Paint.** All Gessner Industrial Products are painted with Ameron 977 ISO FREE paint with hardener.
- **Fasteners.** All fasteners utilised in Gessner Loader Rippers are made from grade 8 high tensile material.

Functional Specifications

ILLUSTRATION PURPOSES ONLY Illustration shows CAT 950K Wheel Loader.
Consult individual model machine-specific details.



SPECIFICATIONS

SHANK SECTION:
174 mm x 50 mm

CYLINDER BORE:
4 inch (101.6 mm)

PENETRAT. FORCE:
9954 kg (21900 lb)

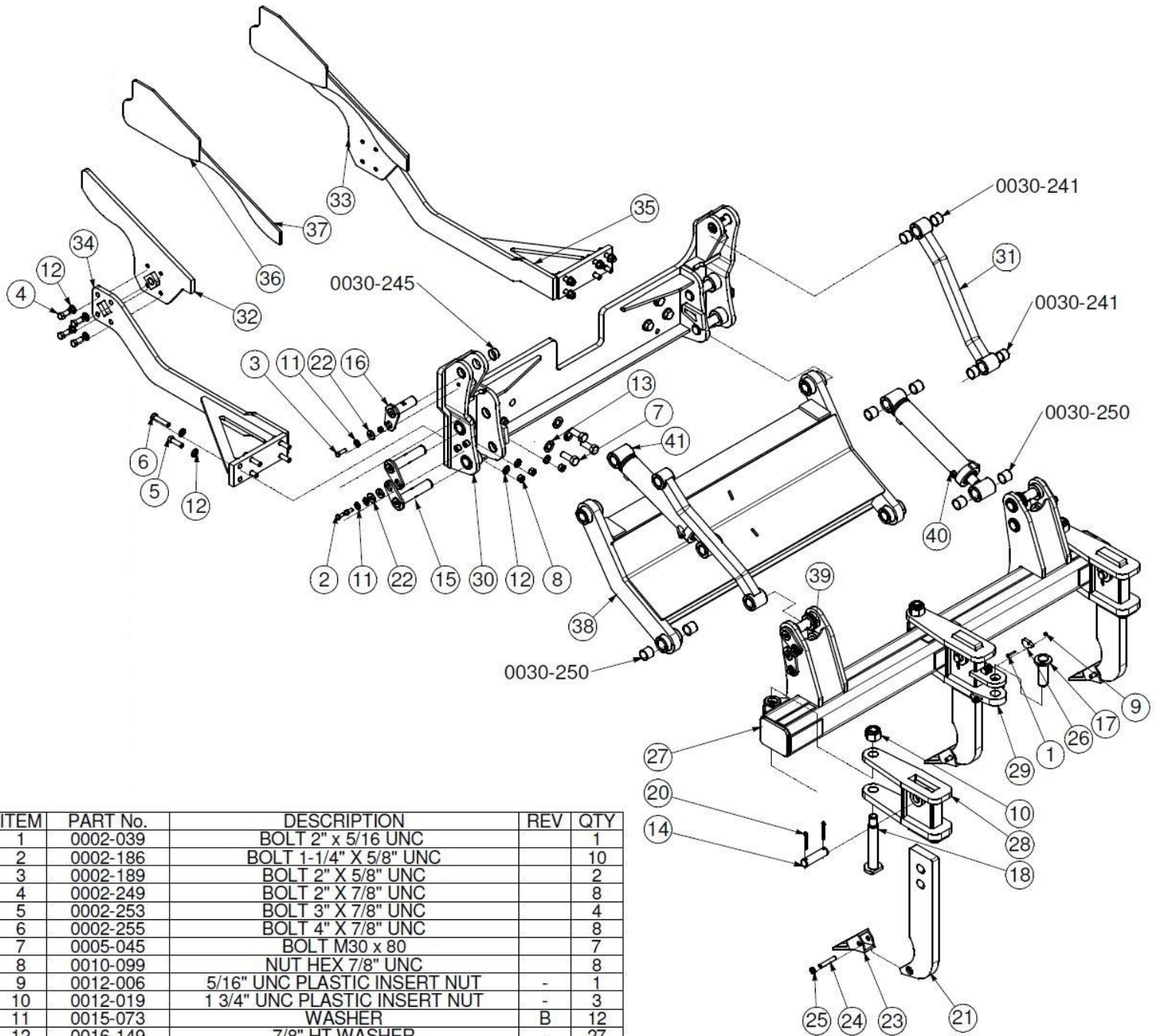
VERT. LIFT FORCE:
12012 kg (26426 lb)

APPROX. WEIGHT:
2175 kg (4785 lb)

For definitions of
dimensions and
specifications refer
to file No. 0031-292

General Assembly

ILLUSTRATION PURPOSES ONLY. Illustration shows CAT 950K Wheel Loader.
Consult individual model GA for machine-specific mounting details. Bottom arm, top arms, cylinder, beam and shanks are common to all LLC3 swivel shank ripper models.



ITEM	PART No.	DESCRIPTION	REV	QTY
1	0002-039	BOLT 2" x 5/16 UNC		1
2	0002-186	BOLT 1-1/4" X 5/8" UNC		10
3	0002-189	BOLT 2" X 5/8" UNC		2
4	0002-249	BOLT 2" X 7/8" UNC		8
5	0002-253	BOLT 3" X 7/8" UNC		4
6	0002-255	BOLT 4" X 7/8" UNC		8
7	0005-045	BOLT M30 x 80		7
8	0010-099	NUT HEX 7/8" UNC		8
9	0012-006	5/16" UNC PLASTIC INSERT NUT	-	1
10	0012-019	1 3/4" UNC PLASTIC INSERT NUT	-	3
11	0015-073	WASHER	B	12
12	0016-149	7/8" HT WASHER	-	27
13	0016-152	1-1/4" HT WASHER	-	7
14	0020-006	PIN Ø1-3/4" x 125mm	A.01	3
15	0022-501	PIN Ø50.80 x 236	B.13	10
16	0022-505	PIN Ø50.80 x 151	B.13	2
17	0024-014	PIN Ø50.8-144 PLAIN ROUND HEAD	E.01	1
18	0027-011	PIN	A.04	3
19	0030-021	BUSH Ø15.875	B	2
20	0034-585	COTTER PIN 10 x 80	B.02	6
21	0041-225/50	SHANK	B	3
22	0047-009	COLLAR	B	12
23	0080-505	POINT - ESCO E9J-8910 / CAT 6Y-0309	A.03	3
24	0080-603	POINT RETAINER PIN (E9J2358)	A.01	3
25	0080-703	RETAINER	A	3
26	0131-003	STOP TOW HITCH	D	1
27	1350-208	3 SWIVEL BEAM LLC3	E	1
28	1350-209	SWIVEL BOX	B	2
29	1350-225	SWIVEL BOX WITH TOW HITCH	C	1
30	1350-505	MOUNT	B.02	1
31	1350-506	TOP ARM	C	2
32	1350-509-L	STAY MOUNT -LH	A	1
33	1350-509-R	STAY MOUNT -RH	A	1
34	1350-510-L	STAY -LH	C	1
35	1350-510-R	STAY -RH	C	1
36	S1350-523/12	LAMINATE PLATE 1 (MS 250)	A	2
37	S1350-524/12	LAMINATE PLATE 2 (MS 250)	A	2
38	1718-107	BOTTOM ARM	B.02	1
39	1718-142	TOP ARM SPACER	B	4
40	2415-052-L	CYLINDER 4" BORE x 387 STK 721 C.C.	B.04	1
41	2415-052-R	CYLINDER 4" BORE x 387 STK -RH	B.04	1





©COPYRIGHT

This design or drawing and any specifications or calculations that relate to this design or drawing are the property of and remain vested in Gessner Industries and must not be manufactured from, copied, or transmitted to a third party without prior written approval from Gessner Industries. It is not sold, and is subject to recall along with any copies immediately on demand. Reproduction of the drawing and copying rights are reserved solely to Gessner Industries under Copyright Law. All information disclosed by this drawing to the holder shall be held in commercial confidence.

CONTACT GESSNER INDUSTRIES

PHONE: 011 61 7 4615 0100

FACSIMILE: 011 61 7 4633 1973

WEB: www.gessner.com.au

EMAIL: manager@gessner.com.au